

Dingo Servo Mounts

Ultra Micro Mount Assembly Instructions.

Please read these instructions right through before commencing.

Take a little care with the assembly and you will have a really robust servo mount. Remember that you can only bend the aluminium once, so make sure you have the correct orientation before bending. (I cannot stress this enough! Check and double check before you bend.) Bending can be done by hand on the edge of a work bench or on a wooden block.

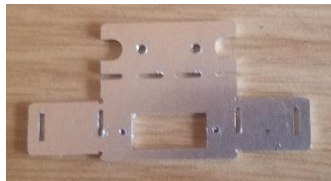
Before you start, make sure that all the parts are in the kit (see Table on the back page.)

Check the metal parts for excess flash from the lasercutting and remove if required with a small file or modelling knife. A small amount of burr on the edges will not affect operation, however check that the slider fits easily in both wings as tolerances here are quite tight and it needs to move freely for reliable operation.

Any pips can be easily filed away.

Start by folding the foot plate down along the dotted line. (Hold the top part firmly while bending to avoid any kinks in the motor mount section.) Make sure that this bend is fully 90 deg. You can always hold the part against the benchtop and just push a little more.

This is the block I use as a bending jig.



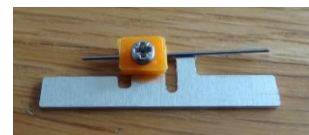
The 2 wings are bent in the opposite direction and can be bent by hand on a wooden block.

You should end up with a unit which looks like the 3rd picture. Note that at this point the wings may not have folded to 90deg. This will enable the fitting of the slider at a later stage, after which we will finalise these bends.



Make up the slider by fitting the wire clip (orange plastic part) with the M2 x 4mm screw in such a way that the raised edge fits along the side in the groove provided. (for point motor)

For a signal version this clip is fitted with the raised



edge over the top of the slider.

No need to fit the control wire at this stage,

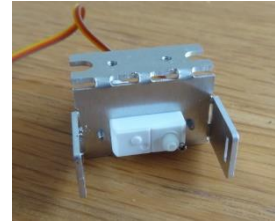
You should now have both parts ready to accept the servo motor.

This mount is designed to fit a Hobby King HK-5330 Digital Servo or the HK- 282A Analogue Servo.

Dingo Servo Mounts

Ultra Micro Mount Assembly Instructions.

Mount the motor from the back with the spindle on the right looking at the front of the mount with the 2 M1.2mm screws. Note: these screws are very tiny and you will need a watchmakers screwdriver to fit them. Do not overtighten as the threads will strip easily.



Now the servo motor needs to be centred by means of a servo tester or the control software.

Get the single servo horn out of the servo pack and modify it slightly by drilling an extra 1mm hole close to the boss. (I made a bit of a mess doing this sample – hence the hole is a bit off)

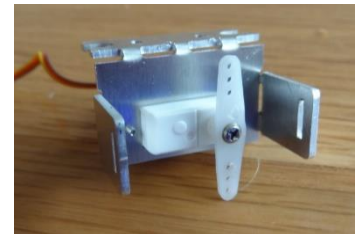
You may also just use the first hole in the horn although this will give more movement of the slider.



Note: you can cut off the other side of the horn if required as this is not needed for the final mount.

Now attach the horn with the small screw provided by the servo manufacturer. **(Be careful with these screws as they have a mind of their own and are hard to find replacements for)**

This needs to be pointing up toward the footplate side of the mount.



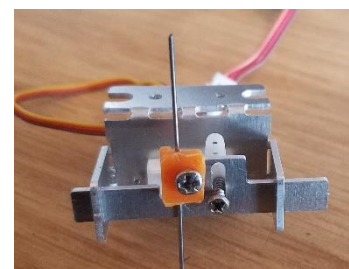
Insert the slider into the frame next.

Fit one side in first and slide all the way home. This can be a bit tricky and you might find one side goes in easier than the other.

The Wire clip needs to be on the “footplate” side.

Once the slider is in place and engaging with both slots in the wings, you can gently fold the wings up to their finished position by hand. Note: if you bend them just past the 90 deg point the slider will be trapped and should move easily from side to side but this may fall out of one side or the other until the drive screw is fitted.

Now fit the small drive screw through the slider and into the extra 1mm hole you drilled into the servo horn.



The actuator pin can be fitted into the groove on the wire clip now if required.



To convert the unit into a signal mount, first bend a 90 deg angle into the side bracket as per the picture.

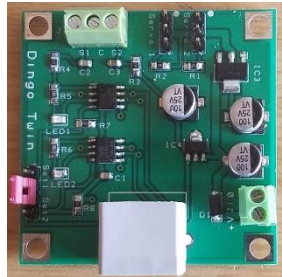
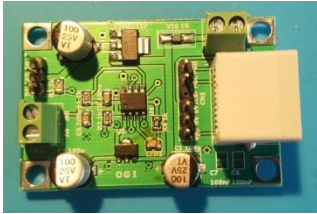
This can be attached to the footplate by the 2 m2 x 3mm screws supplied. A variety of slots are provided to allow adjustment when positioning the unit.

The unit can now be mounted on the layout with the 2 flanged fixing screws.

Dingo Servo Mounts

Ultra Micro Mount Assembly Instructions.

Dingo Servo Mounts have a Single and a Twin servo board unit which will operate this unit. Other control boards are on offer from MERG (in kit form) or from various suppliers of model train servo equipment.



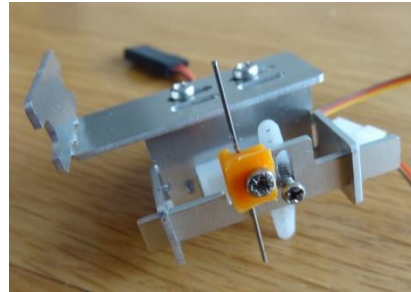
I hope you have many trouble free hours operating this unit. I welcome feedback in order to improve the units for the future.

Please forward any comments or issues to me.

David Ingoldby

Email - dingoservo@gmail.com ,

Mob 0775 4901324. www.dingoservo.co.uk



Parts List

No	Description	Qty
1	Main Body	1
2	Slider	1
3	Side Bracket	
4	Actuator wire (0.5mm)	1
5	Wire Clip (orange)	1
6	M2 x 3 mm Pozi Pan Head Screws	2
7	M2 x 4 mm Pozi Pan Head Screws	1
8	M1.2 x 4 mm Philips Pan Head Screws	2
9	1.7mm Retaining Screw	1
10	3mm x 6mm long Flange fixing Screws.	2